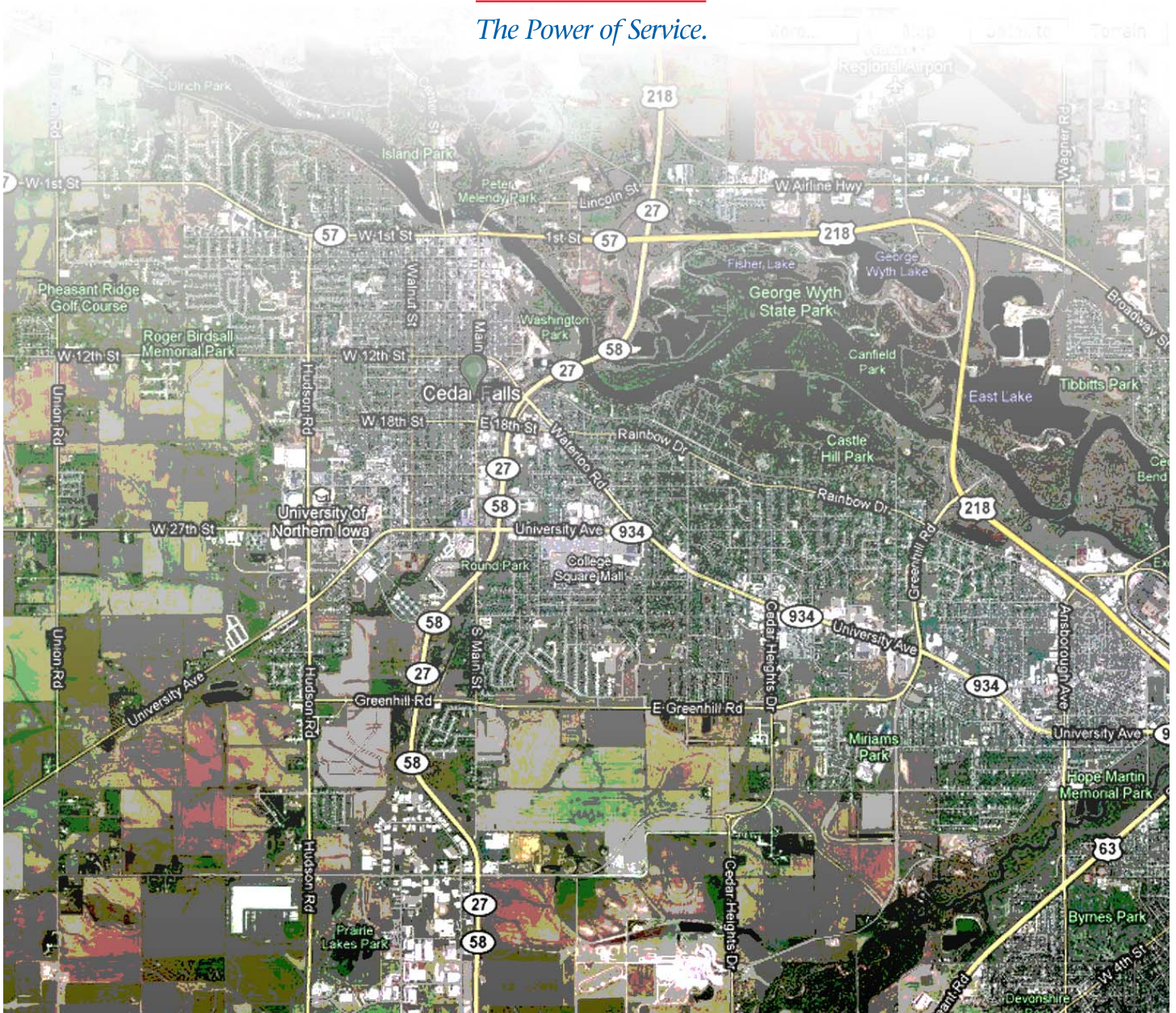


# 2010 Energy Efficiency Incentives for Cedar Falls Businesses



**CEDAR FALLS  
UTILITIES**

*The Power of Service.*



Item	Rebate	Minimum Standards
<b>Direct install equipment - no pre-approval from CFU required</b>		
Programmable Thermostats	\$25 per unit	ENERGY STAR QUALIFIED
Packaged Terminal Air Conditioners	\$50 per unit	10.5 EER (Cooling)
Packaged Terminal Heat Pumps	\$50 per unit	10.5 EER (Cooling) 3.0 COP (Heating)
<b>Custom equipment - requires pre-approval from CFU</b>		
<b>Ground-source Heat Pumps</b> Less than 300 MBtuh; open and closed loop	\$600/heating ton for new ground loop installations	3.3 COP (Heating) 14.1 EER (Cooling)
	\$300/ heating ton for existing ground loop installations	3.3 COP (Heating) 14.1 EER (Cooling)
Greater than 300 MBtuh	Custom Program	Custom Program
<b>Air-source Heat Pumps</b> Less than 65 MBtuh; two-stage systems	\$300 plus \$100 per SEER above 15.0, \$600 maximum	8.5 HSPF (Heating) 15.0 SEER (Cooling)
Greater than 65 MBtuh	Custom Program	Custom Program
<b>Natural Gas Boilers</b> Less than 400 MBtuh	\$400	92% AFUE (Heating)
Greater than 400 MBtuh	Custom Program	Custom Program
<b>Natural Gas Furnaces</b> Less than 225 MBtuh	\$200	95% AFUE (Heating)
Greater than 225 MBtuh	Custom Program	Custom Program
<b>Central Air Conditioners &amp; Rooftop Units</b> Less than 65 MBtuh	\$200 plus \$100 per SEER above 14.0, \$500 maximum	14.0 SEER (Cooling)
65-240 MBtuh	Custom Program	10.8 EER (Cooling)
Greater than 240 MBtuh	Custom Program	9.8 EER (Cooling)
<b>Compact Fluorescent Lamps and Fixtures</b>		
Compact Fluorescent Light Bulbs	50% of cost up to \$5/bulb	Any ENERGY STAR qualified CFL
Compact Fluorescent Fixtures	\$20 per fixture	ENERGY STAR fixtures that use pin-based lamps (not screw-in lamps)
Ceiling Fan Light Kits	\$20 per light kit	Any ENERGY STAR qualified light kit, including those that come packaged with ENERGY STAR ceiling fans. Light kits must use pin-based (not screw-in) CFLs. ENERGY STAR ceiling fans are not eligible.

Download commercial rebate application forms at [www.cfu.net/save-energy](http://www.cfu.net/save-energy)

Item	Rebate	Minimum Standards
Occupancy Sensors Wall mounted Ceiling mounted High bay	\$15 per unit \$25 per unit \$25 per unit	Must control more than 400 watts Must control more than 400 watts Must control more than 150 watts
<b>Linear Fluorescent Lamps and Fixtures for Existing Buildings</b>		
<b>U-Bend T8 Fixtures</b> <b>T8 Fixtures</b> 2 ft. 1 lamp or 2 lamp 4 ft. 1 lamp 4 ft. 2 lamp 4 ft. 3 lamp 4 ft. 4 lamp 4 ft. 6 lamp 8 ft. 1 lamp 8 ft. 2 lamp	\$10 per fixture  \$10 per fixture \$ 6 per fixture \$ 9 per fixture \$14 per fixture \$18 per fixture \$23 per fixture \$ 8 per fixture (\$10 for T8 HO) \$14 per fixture (\$20 for T8 HO)	Electronic ballasts  Electronic ballasts; mounting height of less than or equal to 15 feet. Must retrofit existing T12 lighting
<b>T5 Fixtures</b> 2 ft. 1 lamp or 2 lamp 46 inch 1 lamp 46 inch 2 lamp 46 inch 3 lamp 46 inch 4 lamp 46 inch 6 lamp 8 ft. 1 lamp 8 ft. 2 lamp	\$10 per fixture \$ 7 per fixture \$14 per fixture \$21 per fixture \$28 per fixture \$42 per fixture \$ 8 per fixture (\$10 for T8 HO) \$14 per fixture (\$20 for T8 HO)	Electronic ballasts; mounting height of less than or equal to 15 feet. Must retrofit existing T12 lighting.
<b>LED Lighting and Fixtures</b>		
Refrigerated case lighting Exit signs Strip lighting Other interior/exterior (such as recessed downlights)	\$25 per door \$15 per sign  Custom Program	Existing facilities only Existing facilities only Existing facilities only Custom Program
<b>High Bay Lighting (1 for 1 replacement of HID lighting; 15 ft. minimum mounting height)</b>		
<b>HID Replaced:</b> 250 - 399 Watt  400 - 649 Watt  650 - 999 Watt  1000 Watt  Other HID Replacement	<b>Rebate per existing fixture</b> \$50 each, min. \$200/kW saved  \$60 each, min. \$200/kW saved  \$70 each, min. \$200/kW saved  \$60 each, min. \$200/kW saved  OR \$120 each, min. \$200 kW saved  OR Custom Program  Custom Program	<b>Eligible replacement technologies</b> High bay fluorescent 155 Watt or less per total fixture: T8 or T5HO High bay fluorescent 250 Watt or less per total fixture, T or T5HO High bay fluorescent 365 Watt or less per total fixture, T8 or T5HO High bay fluorescent 800 Watt or less per total fixture, T8 or T5HO High bay fluorescent 500 Watt or less per total fixture, T8 or T5HO  Other high-bay - non-T8 and T5HO  Custom Program

**Other lighting projects may be eligible for customized incentives. Contact CFU at 319-268-5355.**

Item	Rebate	Minimum Standards
<b>Non-residential Food Service</b>		
Ice machines	\$100	ENERGY STAR qualified commercial model
Vending machine controllers	\$50 per unit	Must control a refrigerated vending machine
Clothes Washers residential or commercial scale	\$100 per unit	Any ENERGY STAR qualified clothes washer. Water heating fuel must be supplied by CFU
Dishwashers residential scale	\$75 per unit	Must use less than 307 KWH/year and less than 5.0 gallons per cycle.
Other Food Service Such as natural gas fryers, steam cookers, convection and conveyor ovens; hot food holding cabinets; glass and solid door refrigerators, freezers	Custom Program	Custom Program
<b>Appliance Recycling Incentives</b>		
Refrigerators	\$50 each	Any working refrigerator more than 16 cubic foot.capacity
Freezers	\$50	Any working freezer more than 16 cubic foot.capacity
Dehumidifiers	\$25	Any working dehumidifiers
Window Air Conditioners	\$25	Any working window air conditioner
<b>Small Motors and Variable Speed Drives</b>		
Variable Speed Drives 1,500 minimum annual operating hours required.	\$40/hp up to 50% of total equipment and installation costs	See application form for additional eligibility requirements
Motors 50 hp or less	Rebate varies with the size and type of motor - see application	Must meet current NEMA Premium Motor standards.
Greater than 50 hp	Custom Program	Custom Program
<b>Building Shell - Non-residential</b>		
Insulation/Water Heating	Custom Program	Custom Program

Download commercial rebate program application forms at [www.cfu.net/save-energy](http://www.cfu.net/save-energy)